

Odyssey
 *Chamber*
music series



Candlelight Holiday

December 6, 2024



MONDAY	Bruce Gordon
TUESDAY	Dale Langford
WEDNESDAY	Carol Greenspan
THURSDAY	Karl Skala
FRIDAY	Charles Turner

Refresh your weekday mornings with classical music on KOPN

MID-MISSOURI'S LARGEST VARIETY OF MUSIC & CONVERSATION

The KOPN classical music program, *Morning Ayre*, may be a tradition, but the expertise and diverse interests of five hosts give it a delightful momentum. Early each weekday, people you know—and some new friends—share their passion for classical. After all, KOPN is the community radio with the most homegrown programming.

Tune in weekdays 5 to 8 a.m. as hosts weave their personal tastes into the classical playlist. Bruce Gordon enjoys adding a touch of eclecticism through ethnic sounds, while Carol Greenspan includes her love for Baroque and Dale Langford strives to energize your commute.

KOPN is brought to you by local talents who are passionate advocates for a whole range of music genres. See how KOPN can refresh your mornings and feed your love of classical music. KOPN.org/schedule.

KOPN 89.5 FM
KOPN.ORG

Locally-grown radio since 1973

Thank You for Your Support!



WWW.ODYSSEYMISSOURI.ORG



Proudly sponsors Odyssey Chamber Music's Season 21.
Celebrating Excellence in Musical Arts and in Health.

For all your dental needs, contact Dr. H. Elaine Cheong
1000 W Nifong Blvd Bldg 8, Ste 120 in Columbia, Missouri
573.499.0300 | HElaineCheongDDS.com

Additional Thanks to:

Christopher and Mina Turner • Dr. Joan Stack
Günter Hans • First Watch • Orchids & Arts • Lenoir Woods
Senior Living • Friends of Chamber Music Kansas City

Odyssey Staff & Volunteers

Executive and Artistic Director Ayako Tsuruta
Piano Technician Lucy Urlacher
Videographer Dr. Aaron Stoker
Audio Dr. Peter Miyamoto
Photographer Katherine F. Blake
Staff / Volunteers Dr. Helena Hyesoo Kim, Jan Tucker
Performance Fellows Ryan Kee, Alexandre Negrão, Daniel Noonan

** Special thanks to the First Baptist Church administration and staff,
especially Brenda Rice and Mike Ide.*

Odyssey Board

Colleen Ostercamp, President
Organist, First Baptist Church

Dr. Helena Hyesoo Kim,
Vice President
University of Missouri
School of Music

Julie Rosenfeld, Treasurer
University of Missouri
School of Music

Dr. Peter Miyamoto, Secretary
University of Missouri
School of Music

Dr. Brandon A. Boyd
University of Missouri
School of Music

Carol Elliott
Data Architect and Musician

Evan Wilde
Columbia Public School
Violinist

Dr. Diane Suhler [On leave, S21]
University of Missouri Instructor,
Asian Affairs
Retired, Columbia College
Professor of Finance and Economics

Ayako Tsuruta
Executive and Artistic Director

Thank you for your support 

Greetings

"Candlelight Holiday" this season is our second installment, inspired by nationally popular 'Candlelight Concert.' Atmosphere adds so much to the overall concert experience, but this beautiful setting tonight is truly a labor of love: *Thank you*, Lauren Miyamoto! Lauren dedicated 9 hours of her time last Saturday, helping me assemble boxes of flameless candles, wrapping many fairy lights around the gold frames, and providing much needed moral support. My sincere gratitude to the First Baptist Church, Colleen Ostercamp for hot chocolate, Brenda Rice, without whom my home would be overfilled with seasonal décor; and my husband Peter Miyamoto, for his patience while I happily shopped for more flameless candles and other related items – like the lighted nutcracker you see on stage tonight.



It is my hope that this shared evening tonight will inspire you to keep Odyssey in mind for the month-long Comogives.com campaign. It is our last attempt to meet our year-end goal – which we will come very close to meeting if we can successfully raise \$20,000 at Comogives.com.

Challenges and raffles are there to lighten the actual gravity of the need to fundraise. Spreading the word about Odyssey is also an effective way to show your support. We would love referrals to businesses that may be interested in advertising, and continue to look for donors who may support Plowman or Concerto Competition winners with cash awards.

THANK YOU to many individuals for years of trusted support, especially by the Bedans, the Keithahns, and Dr. Elaine Cheong, DDS, along with many whose donations extend well over a decade. Odyssey is also grateful to be able to collaborate with the same organizations that founded and continue to enthusiastically support Plowman Competition.

Happy Holidays!

A handwritten signature in cursive script, appearing to read 'Ayako Tsuruta'. The signature is fluid and extends to the right.

Ayako Tsuruta
Executive and Artistic Director

First Baptist Church of Columbia
Presents
Odyssey Chamber Music Series
Season Twenty-One, Concert Four

Candlelight Holiday

Friday, December 6, 2024 at 7:00pm

Transcendental Étude No. 12 in B \flat Minor [6'] Franz Liszt
"Chasse-neige" (1837/1852) (1811-1886)

Jinhong Yoo, piano



Greetings by Ayako Tsuruta, Director

Ukrainian Bell Carol (1904), [5'] Mykola Leontovych
arr. by Zach Heyde and Franck Tedesco (1877-1921)

Ayako Tsuruta and Peter Miyamoto, piano

Sonata for oboe and piano (2016) [20'] Brian Raphael Nabors
I. Restless (b. 1991)
II. Contemplative
III. Con moto

Alison Robuck, oboe
Ayako Tsuruta, piano

Introduction and Variations, D.802 (1824) [21']

Franz Schubert
(1797-1828)

Alice Dade, flute
Peter Miyamoto, piano

Intermission [12']

The Nutcracker Suite, Op. 71a,
arr. E. Langer (1892) [20']

Peter Ilych Tchaikovsky
(1840-1893)

- I. Miniature Overture
- II. March
- III. Dance of the Candy Fairy
- IV. Russian Dance, "Trepak"
- V. Arab Dance
- VI. Chinese Dance
- VII. Dance of the Reed-Sluter
- VIII. Waltz of the Flowers

Ayako Tsuruta and Peter Miyamoto, piano

Christmas Fantasy for organ and piano [5']
- The First Noel, Silent Night, Regent Square

Clarence Kohlmann
(1891-1944)

Colleen Ostercamp, organ
Ayako Tsuruta, piano



*Thank you for supporting your musician friends, neighbors, and teachers!
See you at our next event, "MOdyssey: Roots & Branches," a beautiful,
original program curated by Alexandre Negrão, Ryan Kee, and Daniel
Noonan, on Feb. 7, Friday at 7pm, here at First Baptist Church.*

ROOTS & BRANCHES



First Baptist Church
1112 E Broadway Blvd,
Columbia, MO 65203

February 7
7:00 PM



Scan the QR to go to Etsy

kfblake fine art

ART PRINTS INSPIRED BY NATURE

Prints available on Etsy shop.

Commissions available upon request - message on Etsy on Instagram



@kfblakefineart



KBlakeFineArt

CONCESSION

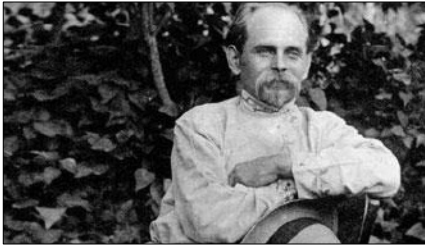
SOLD DURING INTERMISSION

Chocolate (as marked)	25¢/50¢
Coffee, Tea, Hot Chocolate	\$2.00
Water	\$2.00

ODYSSEY SHOPPE

Odyssey or Plowman Mug	\$ 5.00
Odyssey Bag (Lg/Sm)	\$20.00
Any 1 CD	\$17.00

Program Notes by Dr. Peter Miyamoto



Mykola Leontovych (1877-1921): Ukrainian Bell Carol (1904), arr. by Zach Heyde and Franck Tedesco

Mykola Leontovych, the composer of "Shchedryk" (The Generous One), the song that was to eventually be known as the "Carol of the Bell" or "Ukrainian Bell

Carol," was a priest who received his musical education at the St. Petersburg Court Capella. In 1917, Leontovych moved to Kiev where he worked at the Mykola Lysenko Institute of Music and Drama and the Kiev Conservatory. Leontovych wrote the first liturgy in the modern Ukrainian language, and his choral works and arrangements became popular throughout Ukraine. He wrote "Shchedryk" in 1904 and premiered it in 1916. "Shchedryk" is based on a Ukrainian folk chant that employs a four-note repeating motif known as an ostinato. Originally associated with the Feast of the Epiphany's New Year's celebrations held in April (before the adoption of the Julian Calendar moved the celebrations to January), the original text proclaims the bounty of the new year.

As World War I ended, Ukraine was one of several countries fighting in the region for autonomy from Soviet Russia. Fighting escalated with the Russian Revolution, and by 1919 fighting led to the soviet occupation of Kiev. During this time, Ukraine's leader, Symon Petliura, spearheaded the formation of the Ukrainian National Chorus, an ensemble that would travel the world, aspiring to gain support for Ukraine's cultural and political independence. "Shchedryk" was among the songs performed as the ensemble performed over 200 times across Europe and to America where it would perform in Carnegie Hall in New York City on October 5, 1922. After hearing "Shchedryk" performed in this concert, composer and choral conductor Peter Wilhousky wrote new text to the song transforming it into "Carol of the Bells," the beloved Christmas carol we know today. Wilhousky worked as an arranger for the NBC Symphony under Arturo Toscanini and helped to popularize the carol through performances in the 1920s and 1930s. Over the years it has been featured in numerous films, television shows and commercials.

By the end of 1921, the Ukrainian National Republic had fallen to Soviet Russia, just months before the Ukrainian Chorus' Carnegie Hall performance. Almost immediately, Leontovych became a martyr for Ukraine when he was assassinated by a Soviet agent.

Program Notes by Dr. Peter Miyamoto



Brian Raphael Nabors (b.1991) Sonata for oboe and piano (2016)

Brian Raphael Nabors is a professor of composition at Louisiana State University. Originally from Birmingham, Alabama, he earned degrees from Samford University and at the Cincinnati College Conservatory of Music.

His music integrates eclectic musical influences from jazz, funk, rhythm and blues, and gospel music in a colorful, harmonic language. His works have been performed by the Boston, Atlanta, Nashville, Cincinnati, Detroit, Fort Worth, and Munich Symphonies as well as the ROCO Chamber Orchestra, the American Youth Symphony, Rochester Philharmonic and Chineke! Orchestra among others. His works have been performed at Carnegie Hall, the Aspen Music Festival, Ravinia Festival and Tanglewood Music Center, and internationally at the Elbphilharmonie Hamburg, Lucerne Festival and Helsinki Festival.

Note from the composer about the Sonata for Oboe and Piano:

I was asked to compose this work by my very good friend & oboist Bonnie Farr for the International Double Reed Society Conference of 2016. It was written during a very modest time in my compositional development, where color and form were at the very heart of each work. I sought to write a sonata that was timeless, almost classic in color and emotional range, and tells a very captivating story through the tapestry of its harmonic language, and stark rhythmic shifts. The oboe is a widely expressive instrument with many emotional colorations, from the whimsical, to the utmost passionate melodic phrases. I wanted a "classic" contemporary model of what an early 21st century oboe sonata could be. It is my great hope that all who listen to this work enjoy it as much as I loved composing it.



Franz Schubert (1797-1828): Introduction and Variations, D.802 (1824)

Franz Schubert's great song cycle, *Die schöne Müllerin*, tells the tale of a wanderer who falls in love with the miller's beautiful

Program Notes by Dr. Peter Miyamoto

daughter only to have his affections rejected when she falls in love with a hunter. As her choice becomes clear, the wanderer begins to fantasize about death, eventually drowning himself in the very river that had led him excitedly on his journey in the opening songs. The third-to-the-last song of the cycle, "Trockne Blumen" (Dried Flowers) is particularly dark, as the protagonist imagines taking the flowers given to him by the miller's daughter, now withered, to his grave, where they will bloom again as proof of the purity of his love.

In 1824, flutist and professor at the Vienna Conservatory, Ferdinand Bogner, commissioned Schubert to write a set of variations for flute and piano. Bogner had played together in the orchestra that premiered several of Schubert's symphonies, and arranged the first performances of several of Schubert's songs. The somber character of "Trockne Blumen" makes Schubert's choice as the basis of a set of variations an unusual one, but Schubert maintains the theme's gravitas only in the introduction and theme. The remaining seven variations, with the exception of the very lyrical Variation III, are a tour de force of virtuosity for both instruments. The penultimate variation features Bachian contrapuntal textures leading to the triumphal march variation that brings this brilliant work to a conclusion.



Peter Ilych Tchaikovsky (1840-1893):

The Nutcracker Suite, Op. 71a, arr. Eduard Langer (1892)

In 1890, following the success of his ballet *The Sleeping Beauty*, Pyotr Ilyich Tchaikovsky (1840-1893) was commissioned to compose a double-billing pairing an opera and a ballet. This resulted in the opera *Iolanta* and a two-act ballet, *The Nutcracker*, based on the E.T.A. Hoffmann story *The Nutcracker and the Mouse King*. The story is set at a Christmas Eve party where young Clara is given a nutcracker by the mysterious magician, Drosselmeyer. After all are asleep, Clara returns to the parlor where she finds Drosselmeyer enchanting the room, enlarging the Christmas tree to enormous proportions. A battle between the Mouse King's army and the Nutcracker and his army of enlarged toy soldiers is won by the Nutcracker when Clara distracts the Mouse King by throwing a slipper at him. The Nutcracker is transformed into a Prince who travels with Clara to a magical land. There they are entertained by Russian candy canes, Arabian coffee, Chinese tea, and the Sugar-Plum Fairy.

Program Notes by Dr. Peter Miyamoto

Nine-months before the ballet was staged, Tchaikovsky extracted eight selections from the ballet to form *The Nutcracker Suite, Op. 71a*. The suite premiered under the composer's direction in St. Petersburg, Russia in March 1892 and was an immediate success. The suite has since been arranged numerous times including solo piano versions by Percy Grainger and Mikhail Plentnev, a two-piano version by Nicholas Economou, and contemporary arrangements by Duke Ellington, Billy Strayhorn, Madonna, Mariah Carey, the Pet Shop Boys, Pentatonix and the Trans-Siberian Orchestra, among many others. Tonight's version is a piano duet version made by Eduard Langer, one of the original faculty members of the Moscow Conservatory when it opened in 1866. His piano students included Sergey Taneyev and Antonina Milyukova, the woman with whom Tchaikovsky had a disastrous marriage.

The premiere of the ballet itself was a failure. It was not until the success of George Balanchine's production of the ballet in New York City, and the further popularization of the work through Walt Disney's movie *Fantasia* that the ballet became one of classical music's best-known pieces. Since the 1960's, the ballet has become a staple during the Christmas season, particularly in the United States, where it generates up to 40% of the annual revenue of some major dance companies.



Clarence Kohlmann (1891-1944)

Christmas Fantasy for organ and piano

Clarence Kohlmann was born and raised in Philadelphia, Pennsylvania and is best known for his arrangements of sacred music for piano and organ. He served as organist of the Ocean Grove Great Auditorium organ in Ocean Grove, New Jersey. His Christmas Fantasy is an original work for organ and piano that incorporates some well-known Christmas

songs including "The First Noel" and "Silent Night" as well as the hymnal tune, "Regent Square."

Program Notes by Dr. Peter Miyamoto

© 2024

For all your musical needs:
Music Suite
1906 N Providence Rd
Columbia, MO 65202
573-442-3040
office@musicsuite.net



Create some memories!



discover public art
 take in a show • explore a museum
 get lost in a gallery • find a festival

Art guides and events calendar
 available at www.CoMoArts.com



CITY OF COLUMBIA
 OFFICE OF
 CULTURAL AFFAIRS

MORE OF WHAT YOU LOVE.

**90.5^{FM}
Classical**

**24/7 Classical Music at
90.5 FM and
MUClassical.org**



**24/7 Public Radio News, Talk
and More at 91.3 FM and
KBIA.org**

**KBIA AND CLASSICAL 90.5 ARE PROUD TO BE A PART OF
MISSOURI'S ARTS COMMUNITY.**

TO SHOW YOUR SUPPORT, CALL (573) 882-6813.

Biographies



Alice K. Dade enjoys a career of great variety including concerto and chamber music appearances, recording projects, television appearances, and guest principal flute of orchestras. As a soloist, Ms. Dade is an award winner of the Olga Koussevitsky Wind Competition of the Musicians Club of New York and The New York Flute Club Competition. She has performed with the Guanajuato Symphony Orchestra (Mexico), Orquesta Sinfónica Juvenil Red de Escuelas de Música de Medellín (Colombia), PRIZM Festival Orchestra, and the Festival Mozaic Orchestra. Ms. Dade has performed chamber music as part of the Busan One Asia Festival, Chestnut Hill Chamber Series, Concordia Chamber Players at The Princeton Festival, Summerfest of Kansas City, and National Flute Association Conventions. Ms. Dade's first solo album, *Living Music*, was released on Naxos in 2018. She can also be heard in chamber music recordings on Evidence Classics performing Michael Fine's Quintet for flute and string quartet and *Arte Verum* with soprano, Barbara Hendricks. Ms. Dade is a recurring guest star of a new PBS series called *Now Hear This*. Scott Yoo, Ms. Dade's husband and host of the show, travels the world chasing the secret histories of our greatest musical works and their composers while discovering connections to today's music, art, and culture. Ms. Dade joined the faculty at the University of Missouri School of Music in 2011 has been a faculty member of PRIZM International Chamber Music Festival, Colorado College Summer Music Festival, Flutes by the Sea Masterclass, and Medellín Festicamara. Ms. Dade attended The Juilliard School is a Powell Artist. She plays a handmade 14K Powell Flute with a platinum headjoint.



Peter Miyamoto enjoys a brilliant international career, performing to great acclaim in recital and as soloist in Canada, England, France, Germany, Greece, Italy, Poland, Russia, Serbia, Switzerland, China, and Japan, and in major US cities such as Boston, Chicago, Dallas, Indianapolis, Los Angeles, Miami, New York, Philadelphia, San Francisco, and Washington D.C. In 1990, Miyamoto was named the first Gilmore Young Artist. He won numerous other competitions, including the American Pianist Association National Fellowship Competition, the D'Angelo Competition, the San Francisco Symphony Competition and the Los Angeles Philharmonic Competition. Dr. Miyamoto holds degrees from the Curtis Institute of Music, Yale University School of Music, Michigan State University, and the Royal Academy of Music in London. His teachers included Maria Curcio-Diamand, Leon Fleisher, Claude Frank, Peter Frankl, Marek Jablonski, Aube Tzerko, and Ralph Votapek, and Felix Galimir, Szymon Goldberg and Lorand Fenyves for chamber music. He has collaborated in performances with members of the Borromeo, Pacifica and Euclid Quartets as well as instrumentalists such as Charles Castleman, Victor Danchenko, Joel Krosnick, Anthony McGill, Amit Peled, David Shifrin, Lara St. John, and Allan Vogel, among many others. Currently Catherine P. Middlebush Chair of Piano and Coordinator of Keyboard Studies at the University of Missouri, Peter Miyamoto was named MU College of Arts and Sciences Professor of the Year in 2021. Miyamoto formerly taught at Michigan State University, and the California Institute of the Arts. After serving as head of the piano faculty at the New York Summer Music Festival in 2003-2015, he served on the faculty of the Curtis Institute of Music's Young Artist Summer Program in 2016-2020. He has presented master classes at major institutions throughout the United States as well as internationally in Canada, China, Greece, Japan, and Serbia. Peter Miyamoto has released six CDs of solo piano music on the Blue-Griffin Label as well as a CD of commissioned violin and

Biographies

piano duos with violinist Julie Rosenfeld on Albany Records. More information is available on his website, www.petermiyamoto.com.



Colleen Ostercamp is the organist at First Baptist Church, a position held for 30 years. She plays the organ, piano, flute and bells. Music has always been a part of her life, as her mother was a piano teacher. Colleen received her Bachelor of Arts in Music Education from Sioux Falls University in South Dakota. Colleen and her husband, Gary, went on from college and seminary to do music and mission work in Brazil, Canada, and Florida, where Gary took chaplaincy training, bringing them to the University of Missouri Hospital in 1990. Their son, Neil, was

a music graduate of MU as well as their daughter-in-law, Whitney. Colleen's next music goal includes teaching her favorite folk songs to Quinn, her grand-daughter.



Alison Robuck teaches oboe at Missouri State University. She performed with Ian Hobson's Sinfonia da Camera for two seasons, David Commanday's Heartland Festival Orchestra for seven seasons, Kirk Trevor's Missouri Symphony Orchestra for eight seasons and Steven Larson's Champaign-Urbana Symphony for five seasons. She has performed with the Baroque Artists of Champaign, Peoria Bach Festival, and Peoria Lunaire. She was an invited performer at the International Double Reed Society conventions in NYC, Tokyo, and Columbus,

Georgia. She performed and coached chamber music for the Ameropa Chamber Music Festival in Prague. In Prague, she performed solo and chamber concerts in many locations around the city including several in the Prague Castle, the Brevnov Monastery and the Rudolfinum's Dvořák Hall. She has performed as a concerto soloist with the Missouri Symphony Orchestra, Bradley University Symphony Orchestra, and the Kansas State University Wind Ensemble. She has taught oboe at the University of Illinois at Urbana-Champaign, Kansas State University, Bradley University, and served as the woodwind coach for the East Central Illinois Youth Orchestra, Youth Music Illinois, and the Missouri Symphony Conservatory. She attended the Music Academy of the West, Sarasota Music Festival, Aspen Music Festival, Texas Music Festival, and the Bowdoin Music Festival. Find her online at www.alisonrobuckoboe.com.



Ayako Tsuruta is Executive and Artistic Director of the Odyssey Chamber Music Series, and Artistic Director of the [Plowman Chamber Music Competition](#). As the winner of competitions, she has appeared as soloist with the Juilliard Symphony, Eastern Connecticut Symphony and Connecticut Chamber Orchestra, as well as Wallingford Symphony Orchestra in the United States, and with University Symphony Orchestra in Edmonton, Alberta. She has

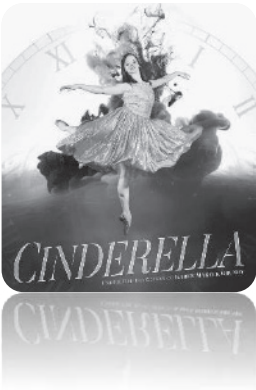
also performed at summer festivals in Aspen, Banff, Ravinia and Tanglewood, Meranofest and Accademia Chiagiana in Italy, and Figueira da Foz in Portugal, as well as recitals in the United States, Canada, Germany, Lebanon, and Serbia. Ms. Tsuruta studied piano with Hiroko Ogura in Nara, Japan, subsequently with Leena K. Crothers at the Neighborhood Music School in New Haven, Josef Raieff at Juilliard School, Claude Frank at Yale University, Maria Curcio-Diamand in England, and Marek Jablonski at the University of Alberta. Ms. Tsuruta has taught as Visiting Assistant Professor at the University of Alberta in Edmonton and at the University of Missouri, in

Biographies

addition to New York Summer Music Festival in Oneonta. In Columbia, she maintains an active private piano studio, and directs [Odyssey's Columbia Music School](#) where music classes are taught on weekends at the MU School of Music



Jinhong Yoo is a piano major at the University of Missouri, studying with Dr. Peter Miyamoto. He is the 2024 winner of the MMTA Collegiate Honors Auditions Graduate Division and the second-prize recipient at the 2024 Jefferson City Orchestra Competition. He has also won numerous awards in his native South Korea, including third prize at the Seoul Orchestra Piano Competition, third prize at the Mozart International Korea Piano Competition, and first prizes at the Incheon Seogu Culture and Arts Festival, World Music News Piano Competition, and Korean Music Piano Competition. During his undergraduate studies, Jinhong consistently earned the top practical score in his department each year, leading to notable performances with the university orchestra, including Rachmaninoff's Piano Concerto No. 1. He has had the privilege of studying with esteemed mentors Professors Kyung-Sun Pi, Chul-Hee Yoon, and Young Hwangbo. As a collaborative pianist, Jinhong has performed in prestigious venues in South Korea, including the IBK Chamber Hall at the Seoul Arts Center and the Lee Kang-Sook Hall at the Korea National University of Arts. His piano trio, Bene Trio, delivered acclaimed performances at the SCC Sun Art Hall as part of the Seoul Y Classic Festival and at Lian Hall, where they presented multiple recitals. The trio was also honored as a nominee for the Ensemble Lian Outstanding Content Selection in 2021. He has successfully completed two solo degree recitals, presenting highly challenging programs that included Rachmaninoff's Piano Concerto No. 3. Actively engaged as a pianist for the New Music Ensemble and Show-me Opera, he has demonstrated exceptional versatility and commitment to both contemporary and classical repertoire. As a recipient of a full assistantship scholarship, Jinhong is preparing for the next step in his academic and artistic journey by applying to Doctor of Musical Arts programs.



Experience a breathtaking, atmospheric production of “Cinderella” for two pianos by Sergei Prokofiev, a collaborative production of Odyssey Chamber Music Series with Marek Center for Dance, on April 18 (Fri) & 19 (Sat), 2025.

Tickets are now on sale only at the University Concert Series box office at Missouri Theatre.

Acknowledgements

Our sincere thanks to ALL the music lovers for their support. Odyssey gratefully acknowledges the generosity of the following donors and sponsors, who make Odyssey Chamber Music Series programming possible.

2024-2025 Membership

[December 1, 2023 – November 20, 2024]

Odyssey Circle

Anonymous [Plowman]
Bill Bondeson and Linda Cupp
Missouri Art Council
Dr. Peter Miyamoto and Ayako
Tsuruta, *in memory of Philip
Miyamoto*
Office of Cultural Affairs

Plowman Circle

Anonymous [Plowman]
First Baptist Church of
Columbia
Stephen and Mari Ann
Keithahn, *in honor of Mr. Scott Yoo*
Missouri Retina Consultants
Georgia Morehouse, *in memory
of Larry G. Morehouse* [Odyssey &
Plowman]

Quintet Circle

David and Nancy G. Bedan,
*in honor of Ayako Tsuruta, Peter
Miyamoto and Lauren Miyamoto*
Dr. H. Elaine Cheong DDS
Drs. Gary and Patricia Coles
Marlene Lee and Bill Hastings
[Plowman and Odyssey]
The Missouri Symphony
[Plowman]
Paul D. Higday Mozart Trust

Quartet Circle

[Anonymous]
Dr. Brandon A. Boyd
Mark Cover
Lucian and Karen Dade
James and Judy Elliott
Norma Fair
Eleanor Farnen, *in memory of
Jane C. Farnen and Mark E. Farnen*

Quartet Circle [con't]

Wanda Gebhardt
Bruce and Kathy Gordon
Dave and Nancy Griggs
Alice Havard
Mari Nau Hunter
Larry Kantner and Carl Morris
Joan Koffler
Aaron and Natalie Krawitz
Ann and David Mehr
Stephen and Joan Mudrick
Office of the President of the
University of Missouri System
Gary and Colleen Osterscamp
Elizabeth A. Peters
Donna and Gil Ross
Pat Rybolt, Owner of the
Music Suite
Marjorie Sable and George
Smith
Allyn Sher and Barbara
Tellerman
Alice Dade and Scott Yoo
Mansoo and Younghee Yu, *in
honor of Mr. Scott Yoo*

Trio Circle

Frances Beach
Bill Clark
Ginny and R. Paul Crabb
Jane C. Crow
Carol Denninghoff
Don and Sharon Ginsburg
Natalie and Aaron Krawitz
Ken Logsdon
Paul and Christine Seitz
Judith I. Stallmann
Leonor Ponferrada and
John Van Stone
Judith Stallman

Trio Circle [con't]

Michael Straw
Wesley Warnhoff
Melissa Williams
Julie Youmans and
Fred Young

Duo Circle

Ann Anderson
James Berchek
Janet Berry
Marilyn and Dennis
Bettenhausen
Jane C. Biers
Phyllis Boillot
Bill Costello
Mary Dohrmann
Carol A. Elliott and
Joseph Howell
Fred Erickson
Elizabeth Eyestone
Barbara Favazza
Kristen Fernandez
Aaron Finkel
Susan Flader
John and Kathleen Foster
Anne Harrell
Stephen Hasselrils
Margaret Heglund
Matthew Higdon
Steven and Jan Houser
Helena Hyesoo Kim and
Curtis Pavey
Janet Krause
Pauline Landhuis
Suhwon Lee
Naomi Sugino Lear
Judith Lefevre, *in honor of Alice
Dade*
Mary Jean Leeper

Acknowledgements

Duo Circle [con't]

Bonnie Marshall
Diane and Nick Mathews
Marilyn McLeod
Diana Moxon and
Tom O'Connor
Dr. C. Jerry Nelson
Dale and Paula Parker
Vera Parkin
Halcyone Perlman
John Rudder and Larry Peterfy
Otho and Pat Plummer
Rita Reed
Jim Rhodes
Richard and Alice Robinson
Bob and Sally Robuck
Alison Robuck
Mrs. James S. Rollins
Julie Rosenfeld and D. Lydia
Redding
Barbara Rothenberger
Jackie and Hank Schneider
Jeanne Sebaugh
Warren Solomon
Paula and Mark Thomas
Janet Thompson
Lorene Trickey
George and Jan Tucker
Chris and Mina Turner
Lucy Urlacher and Chris Vitt
Mary and Steve Weinstein
Karen Kushner and Robert
Weirich
Robert Gail Woods

Solo Circle

Emily Andrews
Ellen Atkins
Richard Barohn
Phyllis Boillot
Stephanie Brooks
Soo-Yeon Cho
Heimei Amy Chow
Jeanhee Chung
Nancy Clark
Kristina Crothers
Nina Crothers
Carol Crouch

Solo Circle [con't]

Thomas Dillingham
Dr. Michael and Julia Dunn
Zhi Gao
Siri Geenen
Enya Gracechild and Nancy
McKerrow
Matthew Gray
Janet Hammen
Matthew Higdon
Patricia Hostetler
Ronald and Lynn Jefferies
Sheila Kausler
Hyemi Lee
Joan Luteran
Mar Manulik
Idolene and Joseph Mazza
Lynn Milyo
Glenda Moum
Mary and Joseph Muscato
Hiroko Nagahata
Huyen-Anh Nguyen
Daniel Noonan
Anita and Yvon Robert
Ken and Sharon Schneeberger
Annabelle Simmons
Wendy Sims
Thomas Waters
Vicky Wilson, *in honor of Patricia Coles*

Founders

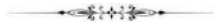
Edward S. Rollins
Carina L. Nyberg

Presenter

First Baptist Church of
Columbia

Sponsors

Missouri Arts Council
Office of Cultural Affairs
Paul D. Higday Mozart Trust



Corporate Sponsor

Silver Level

Dr. H. Elaine Cheong DDS
Missouri Retina Consultants

Corporate Sponsors
The Missouri Symphony
[Plowman]

Bronze Level

The Mid-Missouri Area Music
Teachers Association
(MMAMTA)

Trio Level

The Music Suite
The MU Honors College

Duo Level

Columbia Foundation of Central
Missouri

Solo Level

Lenoir Woods

In Kind & Volunteers

Cheryl Brewer
Jody Chiang and Emery
Soo-Yeon Cho
Ben Colagiovanni
Alice Dade and Scott Yoo
Carol Elliott
Ludwing Epindola
Ethan Fu
Joanna Griffith
Susan Goudie
Scott and Alice Harris
Alice Havard
Beth Hemke and
Skylark Bookshop
Hoa Hoang
Mike Ide
KBIA 91.3FM / KMUC 90.5 FM
Jihyo Jung
Seunghyo Jung
Ryan Kee
Bomi Kim
Helena Hyesoo Kim and
Curtis Pavey
KOPN 89.5 FM
Ted Krause
Tenson Liang
Marlene Lee
Mid-Missouri Area Music
Teachers Association
Missouri Retina Consultants
Lauren Miyamoto
Dr. Peter Miyamoto
Stephen and Joan Mudrick
Alexandre Negrão

Acknowledgements

In Kind & Volunteers [con't]

Gary and Colleen Ostercamp
Joy Pang and her family
Brenda Rice
Alison Robuck and her family
C. Gregg and Diane Suhler
Lun Tong
George and Jan Tucker
Chris Turner and his family
Kyrsten Wehner
Andrew Weir

Dean Wibe
Nicholas Wu
Kristen Yu

THANK YOU to countless
volunteers who make
Odyssey and Plowman
Competition & Festival events
possible.

Odyssey Chamber Music Series,
Inc. is a 501(c)(3) non-profit
organization.

Your contributions are tax-
deductible to the extent
permitted by law.

DONATION FORM

TOTAL ENCLOSED \$ _____

Check(s) are payable to "Odyssey"

Your information:

Name

Address

City _____ Zip Code _____

Mail to: Odyssey Chamber Music Series
1112 E Broadway
Columbia, MO 65201

Odyssey Chamber Music Series, Inc. is a 501(c)(3) non-profit
organization. Your contributions are tax-deductible to the extent
permitted by law.



This fundraiser is our **LAST** chance to meet our year-end goal. Let's have some fun, while effectively supporting Odyssey.

Challenge No. 1: Matching Challenge!

Dr. David and Nancy G. Bedan, Dr. Elaine Cheong, DDS, Dr. Mari Ann Keithahn and Missouri Retina Consultants, and Dr. Peter Miyamoto and Ayako Tsuruta, are all joining forces again this year, to match your COMOGives.com donations up to \$8500 this month.

Raffle No. 1: Two Ways to Enter to Win the "Nutcracker" basket (\$70)

1. Donate to Odyssey via COMOGives.com during its "Power Hour" on **Thursday, December 14 between 4-7pm**, and you will be entered TWICE for every \$25 donation Odyssey receives.
2. Every \$25 donation or **a returned 12/6 survey** with your information = 1 entry.



Drawing for the basket will take place on December 15, Sunday.
 The winner will be contacted; if this person lives out of town, items may be shipped at their expense, excluding the basket.

**Disclaimer* Non-winning entries from Raffle No. 1 will be transferred to Raffle No. 2.*

Challenge No. 2: Reach \$20K Goal at COMOGives.com!

COMOGives.com is just one of many tools to help raise funds for Odyssey this season. To help us reach our year-end goal, we have another offering:



Raffle No. 2:

TEN x \$25 The District Gift Cards Giveaway!

Odyssey is raffling 10 x \$25 donated "The District" gift cards, when we reach \$20,000 at COMOGives.com.

One person may win up to 4 gift cards!

Donate \$25 for one entry; *Double* your chances by donating during ANY designated Power Hours 4-7pm on Dec 12 (Thu), Dec 17 (Tue) or Dec 20 (Fri)]. Drawings will take place January 1, 2025.

Did you know you can use "The District" Gift Card at 58 businesses in downtown Columbia? See the complete list here:

mydowntowngiftcards.com/product/downtown-columbia-gift-card/

The Odyssey Chamber Music Series, First Baptist Church of Columbia,
the Missouri Symphony, and the University of Missouri
present

The Plowman

CHAMBER MUSIC COMPETITION

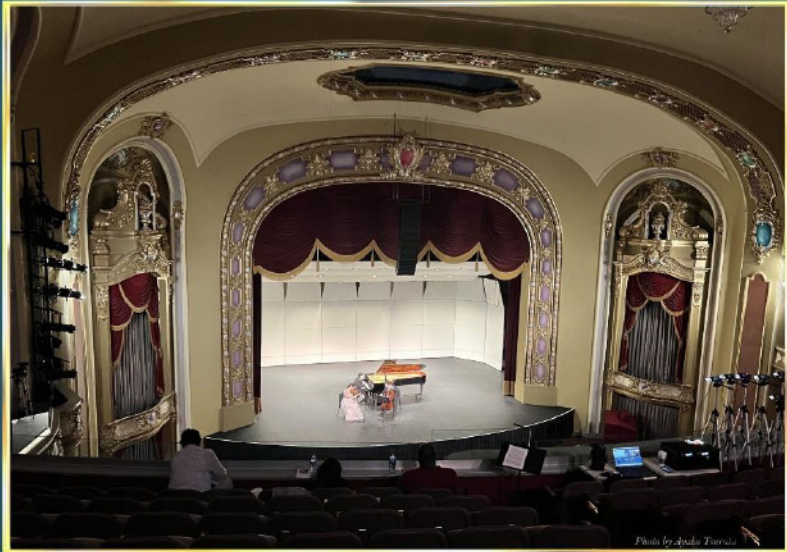


Photo by Ayako Tsuruta

March 22 & 23, 2025

First Baptist Church @ Missouri Theatre in Columbia, Missouri

Peter Miyamoto, Executive Director • Ayako Tsuruta, Artistic Director

Judges

Edward Auer, piano
Indiana University

Ida Kavafian, violin
Curtis Institute of Music

Chien-Kwan Lin, saxophone
Eastman School of Music

TWO CATEGORIES:

Piano & Strings

Woodwinds, Brass
& Percussion

Application Deadline:

February 7, 2025

Late Application Deadline:

February 14, 2025

\$5,000 Grand Prize &

\$2000 Odyssey Award

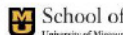
\$2,500 First Prizes

\$1000 Honorable Mentions

\$500 Vianello Audience Prize



University of Missouri System
COLUMBIA | KANSAS CITY | ROLLA | ST. LOUIS



EXPERIENCE | COMPASSION | SKILL

*Whether creating beautiful music or preserving sight,
skill and experience matter.*

*Our mission is to provide the highest level of care
to patients with retinal and posterior segment disease.*



MISSOURI RETINA

CONSULTANTS, PC

Mari Ann Keithahn, MD, FASRS

105 N. Keene St., Ste. 102, Columbia

511 S. Baltimore St., Kirksville

573.777.8738 | MissouriRetina.com

